

# MEC 200

## Electro-mechanical sliding gate operator maximum 1200 kg

This electro-mechanical sliding gate operator was developed thanks to considerable experience in the large gate operator sector. It is the ideal application for long-lasting heavy industrial gate automation.



- Strong and long lasting for heavy industrial gates
- Adaptable to fit different installations thanks to the Vertical and Horizontal versions
- Bronze-steel coupling in oil bath fully mounted on ball bearings
- Adjustable torque in oil bath
- Reversible version





Horizontal MEC 200



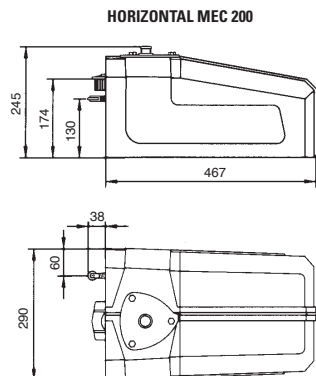
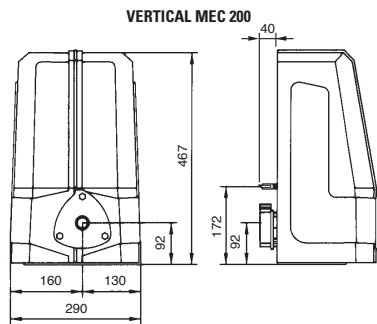
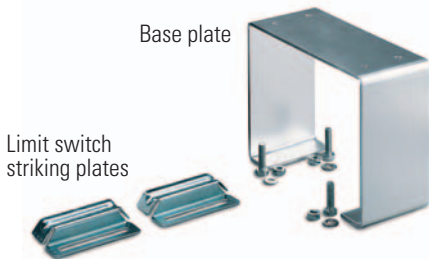
Vertical MEC 200



## Versions

Power	Gate weight	Models
0.37 kW (0.5 HP)	600 kg	Vertical - Horizontal
0.73 kW (0.5 HP)	800 kg	- Single-phase - Ventilated
1.1 kW (1.5 HP)	1200 kg	- Three-phase - With brake
(only three-phase)		- Reversible Single-phase and Three-phase

## Dimensions



## Technical specifications

### ELECTRIC MOTOR

	Single-phase	Three-phase	Single-Phase	Three-Phase	Three-phase
Power output .....	0.37 kW (0.5 HP)	0.37 kW (0.5 HP)	0.73 kW (1 HP)	0.73 kW (1 HP)	1.1 kW (1.5 HP)
Supply voltage / Frequency .....	230 V - 50 Hz	230/400 V - 50 Hz	230 V - 50 Hz	230/400 V - 50 Hz	230/400 V - 50 Hz
Absorbed power .....	510 W	575 W	1'130 W	1'030 W	1'500 W
Absorbed current .....	2.4 A	2.1/1.2 A	5.7 A	3.7/2.2 A	5.1/3 A
Motor rotation speed .....	1'380 r.p.m.	1'380 r.p.m.	1'380 r.p.m.	1'380 r.p.m.	1'380 r.p.m.
Capacitor .....	20 µF		30 µF		
Intermittent service .....	S3	S3	S3	S3	S3

### OPERATOR

	Single-phase	Three-phase	Single-Phase	Three-Phase	Three-phase
Rated torque .....	2.5 Nm	2.5 Nm	5 Nm	5 Nm	7.6 Nm
Gear ratio .....	1/32				
Travelling speed .....	9.6 m/min.				
Working temperature .....	-20°C +80°C				
Oil type .....	Agip ROTRA THT - W80 - Kg 0.22				
Maximum gate weight .....	400 Kg	450 Kg	800 Kg	850 Kg	1'200 Kg
Vertical MEC 200 weight .....	19 Kg	18 Kg	23 Kg	21 Kg	25 Kg
Horizontal MEC 200 weight .....	19.5 Kg	18.5 Kg	23.5 Kg	21.5 Kg	25.5 Kg
Protection standard .....	IP 557				

### PERFORMANCE

Service cycle .....	25 s opening - 30 s dwell - 25 s closing
Time for one complete cycle: .....	80 s.
Complete Opening – Dwell – Closing cycles .....	45/hour
Annual cycles (with 8 hours of use per day) .....	131'000

