



OPERATOR TECHNICAL DATA

POWER SUPPLY	24 V dc
OPERATING TEMPERATURE	-20°/+70°C
LEAF OPENING	110°, 140°, 180°
MAX. LEAF WIDTH.	1.8 mm
MAX. LEAF WEIGHT	400 kg
OPENING TIME	20 sec (110°)

OPTIONAL ACCESSORIES

The following elements can be supplied as optionals:

- Manual lock for **SB 73** emergency release device, consisting of a lock with customised key that prevents use of the emergency release pedal on the leaf; the lock can be accessed from both the inside and the outside of the gate.
- Steel gate support that makes it possible to prepare the leaf for coupling with the operator before galvanising the metallic structure; after galvanising the leaf can be fastened easily to the operator with just a bolt, without drilling or welding anything (operations that would damage the galvanising).
- Slowing device consisting of cam ring and waterproof limit switch for fitting together with T4 Power unit.

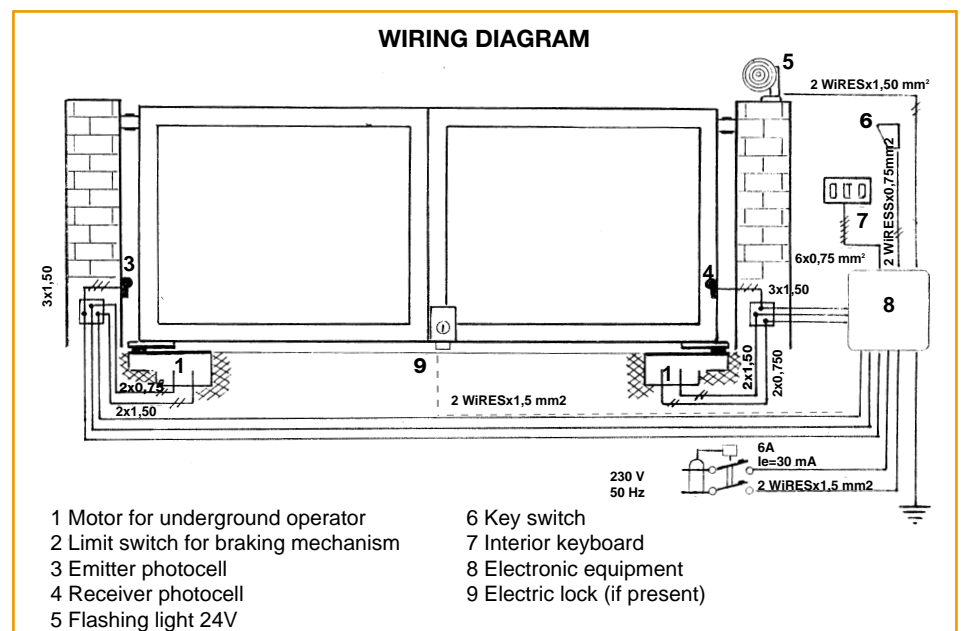
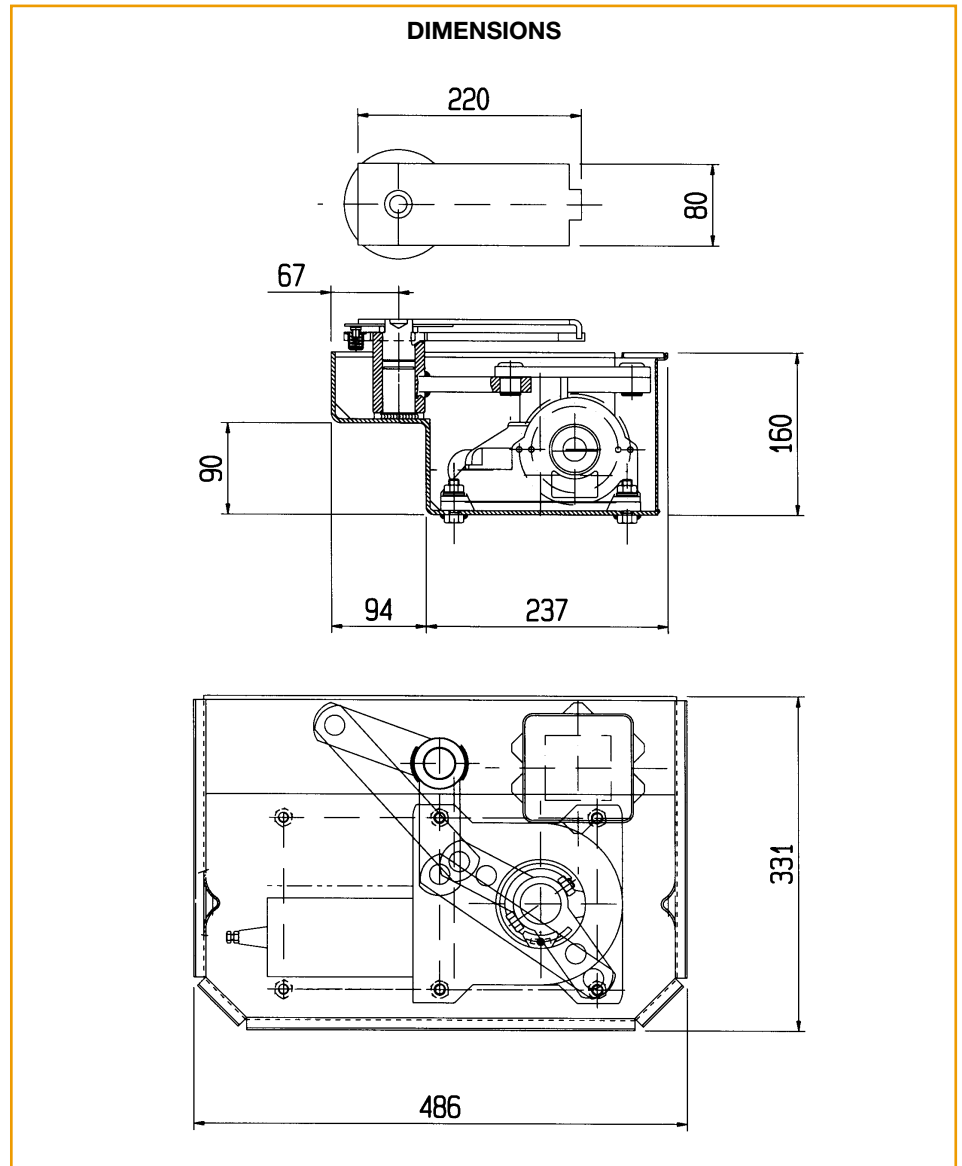
TECHNICAL RECOMMENDATIONS

Before installing, read the technical manual carefully.

Make sure the case that holds the operator is firmly secured to the ground with adequate cement.

It is very important for the leaves to have a stop on the ground for both the closed and the open position. A junction box should always be provided; it should be watertight and protected at IP65 level and should be installed on the pillar near the operator so that the cables that come from the electronic device can be connected to those of the operator.

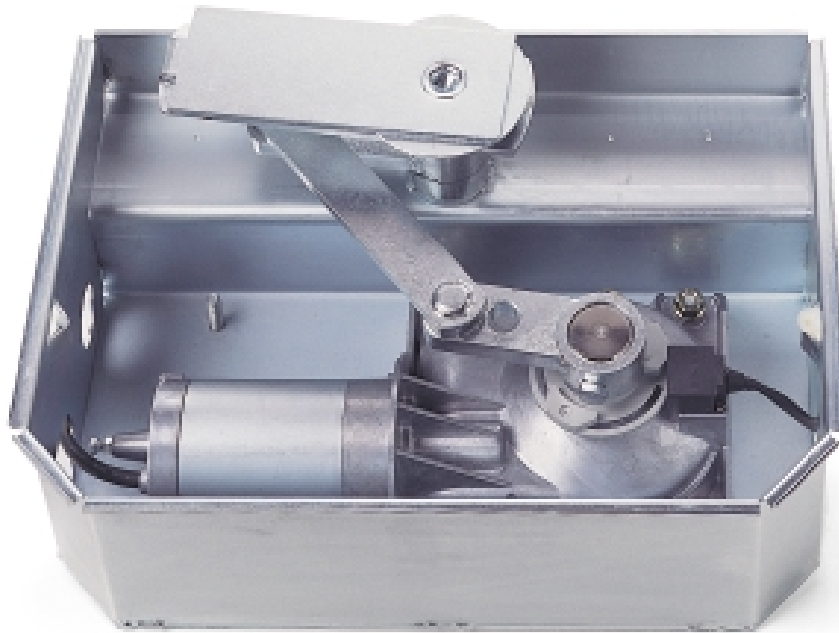
Make sure there is good drainage for any rainwater that accumulates in the underground case.





EM 73N System

Aprimatic
THE AUTOMATIC OPENING



No alteration to the gate appearance.
For elegant residential type swing gates, Aprimatic has developed **EM 73N**: an electromechanical operator that does not detract from the appearance of the gate because the automation is underground and thus invisible.

On the outside **EM 73N** looks like a self-standing container in sheet metal with galvanised base and lid, holding all the organs of movement consisting of: a DC gearmotor that operates at 24V, a system of levers with galvanic anticorrosion treatment, that can open the gate by 110°, 140° and 180°.

EM 73N is designed to move leaves of up to 1.8 m. weighing up to 400 kg. each. As it is not reversible, the operator ensures perfect locking of the gate in the closed position and, in this case, no electric lock is needed. If, however, it is installed on gates of up to 3.5 m. weighing 200 kg per leaf, an electric lock is necessary.

Noiseless and extremely safe.

The application of an optional slowing system together with a suitable unit enables **EM 73N** to open the gates rapidly, then slow them at the approach point to prevent

noisy impact and backlash. These are features that make the gate much easier to use and more silent. The anti-crushing safety function is performed by an electronic unit incorporated in the electrical power supply that makes **EM 73N** a highly safe and reliable operator.

In case of power black-outs, a manual release allows the gate to be opened and closed with a simple operation.

MODELS

The operator is supplied in a basic version that is designed to open gates by 110°. If necessary, **EM 73N** can be equipped with a separate set of levers to open to 140°, or with a chain-operation pinion system to open to 180°.

The electromechanical **EM 73N** operator can be controlled exclusively by **T4** power control unit.

